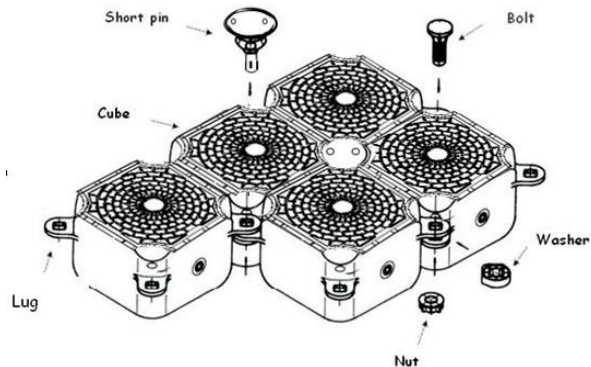
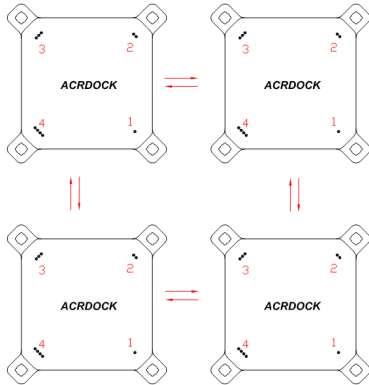


The main features of the Modular Float System (plastic pontoon) are the four fixing **lugs** around the cube and the **short pin** in the middle which holds the four lugs coming together when we assemble 4 **cubes**. In this module system way, we can expand the assembled surfaces to any form, any size as we wish. The Modular Float System can also be used for 2 or 3 layers of pontoon fixing with **long pin**.

Please note the lugs no.1 to 4 as below:

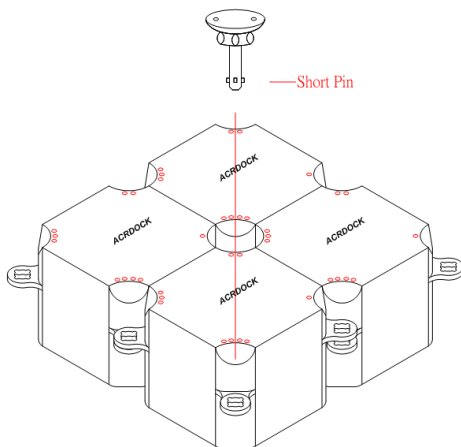


1. How to Install the cubes:

Please note the **lugs No. 1 to 4** as below, install the **cubes** according to 1,2,3,4 lugs, then we can get the cubes coming together and expand the cubes to the size as we wish.

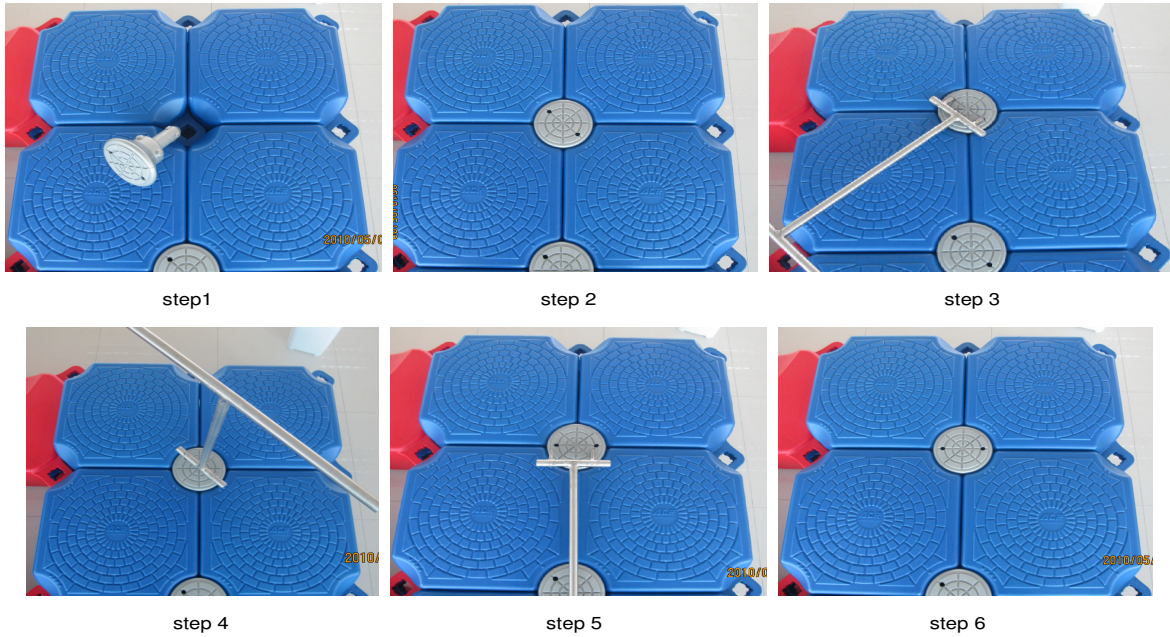


2. How to install the short pin:



Please put the **short pin** in the middle and through the 4 lugs, use the stainless steel **torque wrench** turn 45° to lock the short pin:

- Step1:** Put the short pin into the lugs.
- Step 2:** Please note the holes of the pin, unlock.
- Step 3:** Put the torque wrench into the holes.
- Step 4:** Turn 45° to lock the short pin.
- Step 5:** Take the torque wrench out.
- Step 6:** Please note the holes of the pin, locked.



step1

step 2

step 3

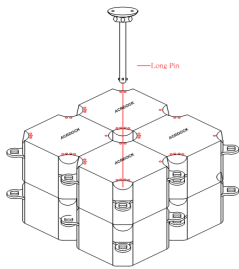
step 4

step 5

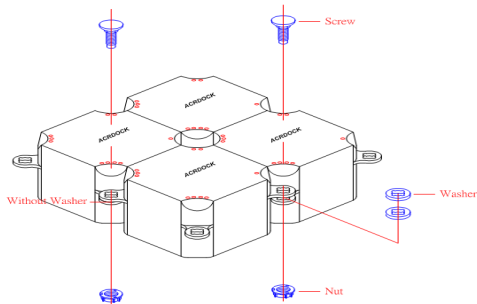
step 6

3. How to install the long pin:

Please put the **long pin** in the middle of the double layers and through the 4 lugs, use the stainless steel **torque wrench** turn 45° to lock the short pin. **It's almost the same as the steps of the short pin installation.**



4. How to install the short screw & nut:

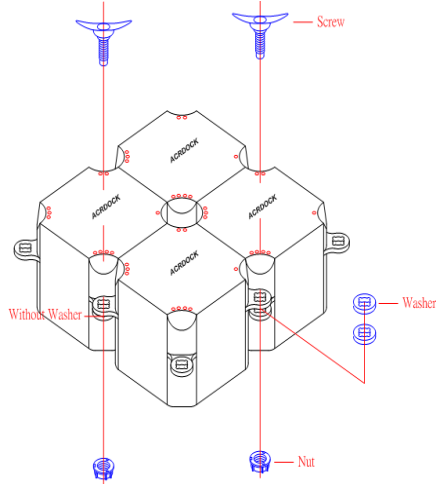


Please put the **screw** through the lugs on sides and lock the **nut** with stainless steel **nut wrench**, please note there is space between No.1 and No.4 lugs, put 2 pieces of washers to fill the space; it doesn't need washers for lugs if there is no space between them.



6. How to install the cleats:

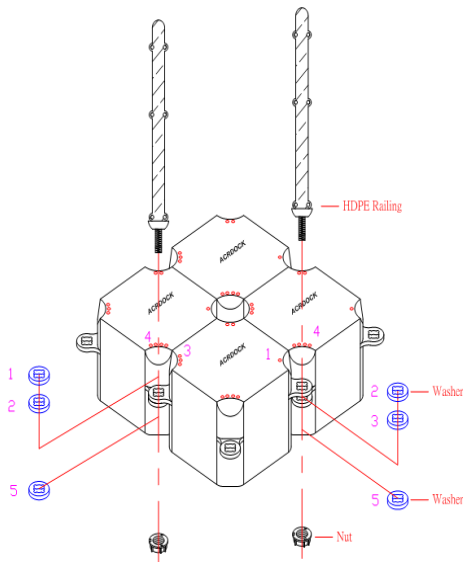
Please put the **cleat** through the lugs on sides and lock the **nut** with stainless steel **nut wrench**. **It's almost the same as the short crew & nut's installation.**



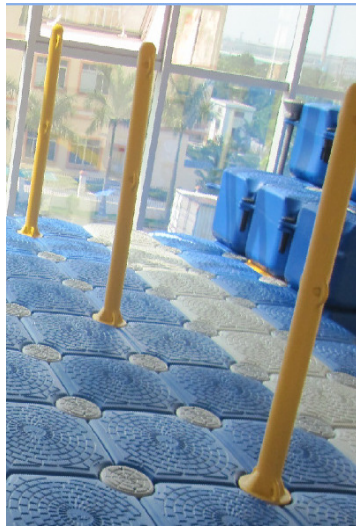
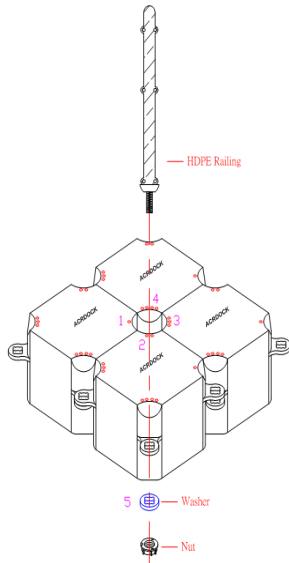
7. How to install the HDPE railings:

7.1 On sides: please put the **railing** through the lugs on sides and lock the **nut** with stainless steel **nut wrench**, please note each railing should get 3 pieces of **washers according to the lugs' number** then we can lock the railing tighten; please note the rings of the railings should be on the same line.

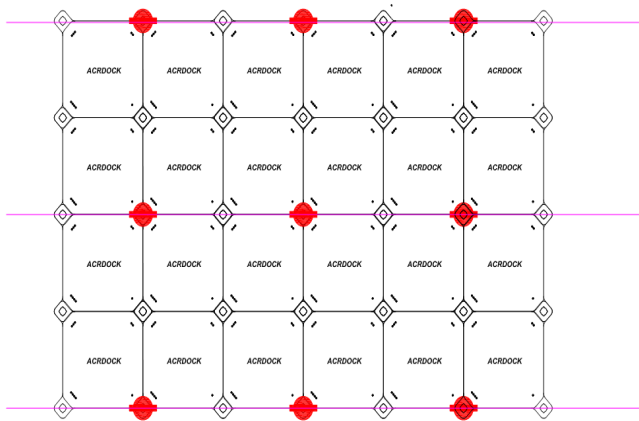
7.2 In middle: Please put the **railing** through the lugs of cubes and lock the **nut** from the bottom of the cubes. We may need to use steel sleeve to lock the nuts. Please note we need put 1 piece of **washer** before lock the nut; and please note the rings of the railings should be on the same line.



HDPE Railings on sides



HDPE Railings in middle



The rings are on the same line

8. How to fill the cubes with water:

Please find the **hole** of the cube, on the side of the **Lug 1 and 4**, open the **cover** with the stainless steel **flooding key**, fill water into the cube.

